

Motorised Linear Axis - FB Range

38mm Travel Motorised Axis; XY stage can be mounted for Transmitted and Reflected Light Applications

The FB range of motorised translation stages offer a wide range of positioning solutions for a variety of applications. Many configurable options are available from a simple motorised linear axis to a full 3 axis stage system. This flexibility is ideal for the requirements of customised solutions, particularly for OEMs supply.

The FB range compliments the accuracy and repeatability expected from Prior positioning systems and is capable of supporting any of Prior Scientifics upright range of stages.

FB Range Features:

- Travel Range 38mm
- 20nm Resolution
- +/-0.7um Repeatability
- Support most Prior Stages
- High Precision Ball Screw
- Adjustable Limit Switches
- Configurable
- Drivable from any Prior Controller
- Drives Horizontally or Vertically



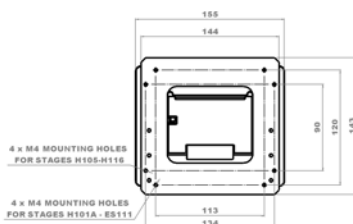
Compatible with ProScan III and the ESI0ZE controllers.

Available Options

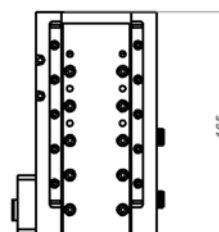
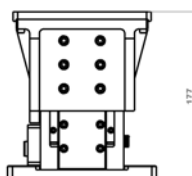
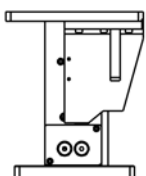
Part Number	Description
FB203	Motorised Linear Axis
FB204	Motorised Linear Axis with Mounting Stand
FB204E	Motorised Linear Axis with Mounting Stand (Encoded)
FB206	Motorised Linear Axis with Mounting Stand for transmitted light
FB206E	Motorised Linear Axis with Mounting Stand for transmitted light (Encoded)

Dimensions

FB204



FB203



Prior motorised stages have a reputation for quality and performance. As an ISO 9001:2000 accredited company Prior equipment is designed and manufactured to the highest quality standards. Prior provides full support and service both direct and indirect through a professional, knowledgeable and extensive global dealer network.

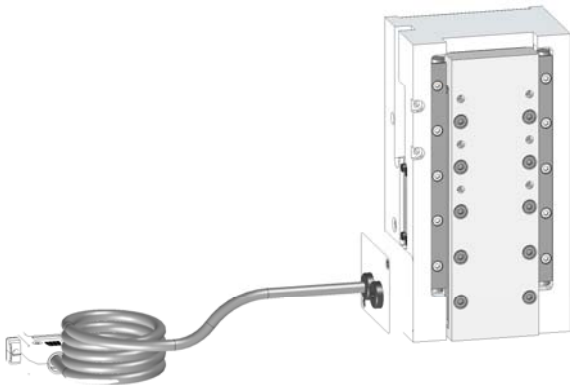
Specifications

	FB203	FB204/6	FB204E/6E	Units
Performance				
Dimensions	165 x 92 x 66	177 x 155 x 143	177 x 155 x 143	mm
*Resolution	20	20	20	nm
*Straightness (Over Full Travel)	+/- 3.5	+/- 3.5	+/- 3.5	um
*Uni-Directional Repeatability	+/- 0.7	+/- 0.7	+/- 0.7	um
*Bi-Directional Repeatability**	+/- 2.0	+/- 2.0	+/- 2.0	um
*Metric Accuracy	< 5	< 5	< 5	um
Drive Mechanism	Zero Backlash Precision Ball Screw	Zero Backlash Precision Ball Screw	Zero Backlash Precision Ball Screw	
Travel Range	38	38	38	mm
Speed Range (with Max load)	1 to 14	1 to 14	1 to 14	mm/s
Pitch / Yaw	40	40	40	Arc Sec
Encoder	No	No	0.1um linear encoder	
Max Load	10	10	10	kg
Cable length	1	1	1	m

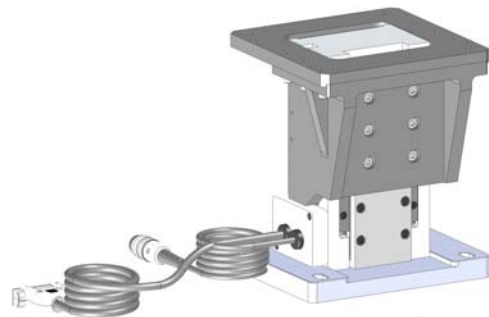
* With Prior ProScan III controller.

** Using a Prior ProScan controllers with backlash correction enabled, all repeatability is Uni-directional.

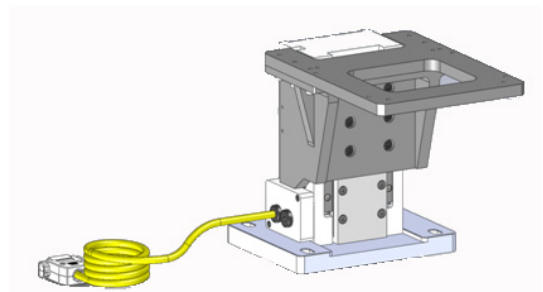
FB203



FB204



FB206



Compatible with ProScan and OptiScan Controller ranges.

Add any Prior stage system to the FB204 to provide a highly accurate transmitted or incident light 3 axis motorised system.



CERTIFICATE NO: FM 61600
STANDARD: BS EN ISO 9001:2000

Prior Scientific Limited
Cambridge, UK.
T. +44 (0) 1223 881711
E. uksales@prior.com

Prior Scientific GmbH
Jena, Germany.
T +49 (0)3641 675 650
E. jena@prior.com

Prior Scientific Inc.
Rockland, MA, USA.
T. +1 781-878-8442
E. info@prior.com