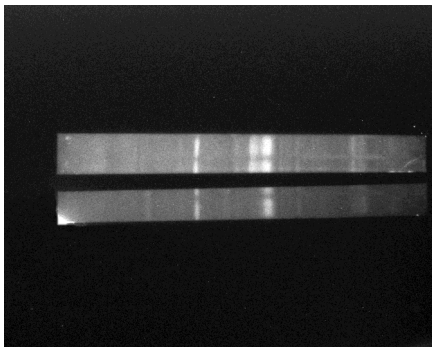
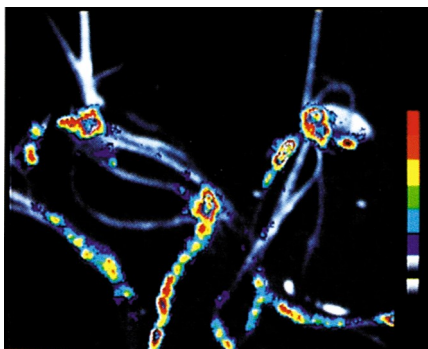


DARKBOX FOR LOW LIGHT APPLICATIONS, ELIMINATES THE NEEDS FOR DARK ROOMS

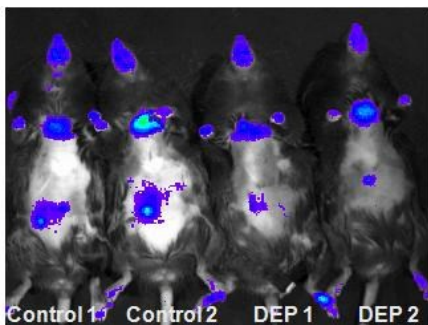
The Unit One darkbox makes it easier to work with bioluminescence, chemiluminescence, fluorescence and photon counting. By moving the image plane to fit the right size of view, instead of using zoom lenses, the sensitivity of your camera can be expanded to its maximum with the use of quality lenses with a low F number. When using a 25 mm F 0.95 you can have a field of view from 70 mm to 190 mm in the darkbox with at least a decade better sensitivity than standard lenses. Further you don't have to darken the room you are working in, The darkbox is completely light tight. Tested with the most sensitive cameras in the market, we can guarantee that the box is light tight to single photon level.



Chemiluminescence



Bioluminescence



Small animal imaging



Darkbox type II with Photometrics evolve EMCCD camera

Options

Turnkey systems



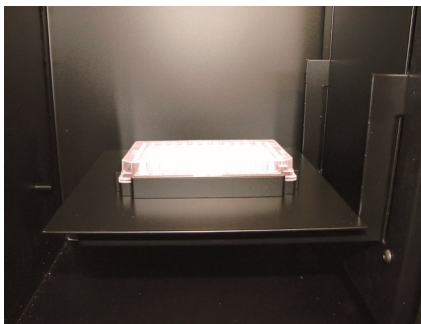
Anesthesia system with induction chamber and a mouse mask.



Fluorescence light generator with built-in filterchanger



Fluorescence ringlight fiber



Micro titre plate holder

www.unit-one.dk

Broveshøjvej 19
4673 Rødving Stevns

All of your specific darkbox needs can be addressed by Unit One. We develop tailored systems to fit your specific laboratory and applications.

Small animal imaging requires the right anesthesia system and ventilation to avoid contamination. Unit One works with you to supply the right filters and ventilators that work with your darkbox.

Contact us to learn about special equipment and accessories for your unique darkbox system needs.

Specifications

Height 700 mm
(without camera adapter)

Width 350 mm

Depth 350 mm

Material: Electro painted Steel

Weight 23 Kg

Max weight on image plane 1 Kg.

Power supply:

international 100-240 VAC 50/60 Hz

Image Plane 200x200 mm